

ILD: FACILITIES

Library

A progressive library housing a large range of books and journals related to management, leadership and allied subjects. The library carries printed as well as electronic resources including databases, audio-visuais, cds, e-journals, reports, case studies and training manuals.



Library



Training Room



Gym

Other Activities

- Indoor recreational facilities like table tennis, chess and carom.
- Outdoor sporting facilities like basketball and badminton.
- A jogging track encircles 30 acres of campus space.
- Innovative walking and cycling tours to explore the nearby unspoilt landscape.
- Specially designed historical and cultural trips into Jaipur city.

Two Training Rooms, Two Conference Rooms and Two Lecture Rooms

All class rooms in the campus are air-conditioned with a seating capacity of more than 40. The rooms are specially designed and equipped with the latest technology to support the needs of training/workshops and interactive sessions.

Coffee Lounge

A comfortable and connected (wi-fi) lounge for discussion and fun.

Gym

The air conditioned gym is equipped with the latest cardio and strength training equipment.

Hostel

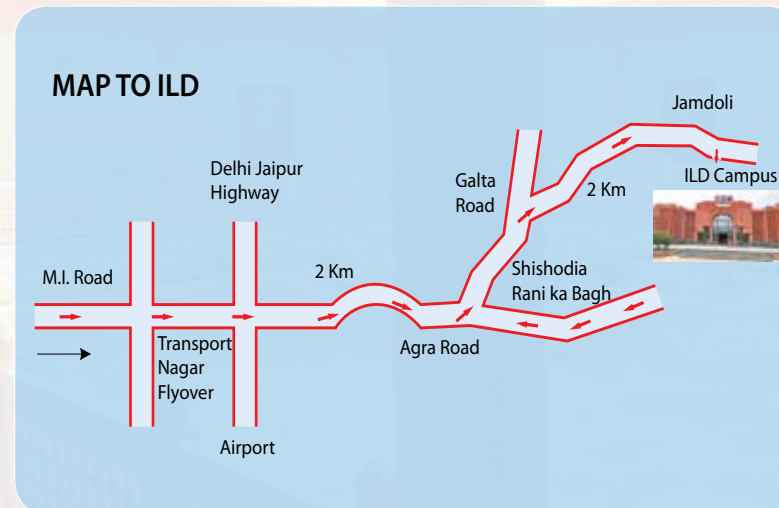
The ILD hostel has 25 air conditioned double rooms with attached bathrooms.



Conference Room



Coffee Lounge



ILD Campus:

Deepak Chaturvedi

6/2, Jamdoli, Near Keshav Vidyapeeth, Jaipur - 302 003
Tel : 91 - 141 - 2680 358, 2681 715 Fax : 91 - 141 - 2680 391
Email: info@ildindia.org, Deepak.chaturvedi@ildindia.org

Corporate Office:

Neha Manocha

652, 1st Floor, Kamaljit Sandhu Block, Khel Gaon, New Delhi
Tel : 91 - 11 - 26494588 Fax : 91 - 11 - 26494587
Email: info@ildindia.org Website: www.ildindia.org



INSTITUTE OF LEADERSHIP DEVELOPMENT

(An IFCI Initiative)

Always
To think well
To do better

The institute graciously offers the use of its campus and residential facilities and educational resources.

as

- An Offsite Destination
- An Out Bound Training Facility
- An Ideal Getaway or Retreat
- A "Partner" Institution

to

- Corporate Entities
- Schools • Colleges
- Educational Bodies and Institutions
- NGO's • Training Organisations
- Social Organisations

for

- Seminars • Workshops • Training Programmes • Public Interest Causes
- Conferences and Conclaves • Exhibitions and Displays • Performing Arts, Theatre, Films • Educational Purposes • Meetings

Our commitment

to broadbase and democratise the sites and spaces for creation and sharing of knowledge and knowledge resources



ILD Campus and Resources

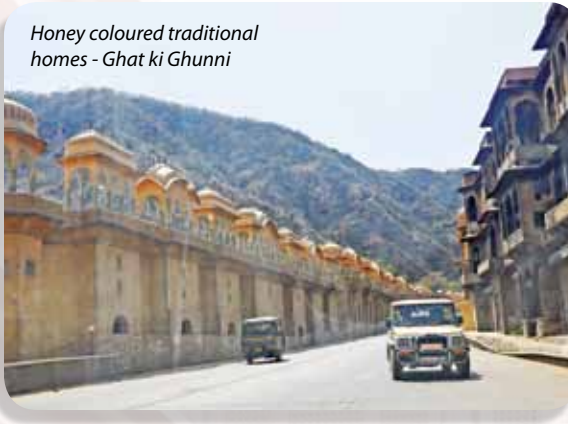
The unique environment of the ILD campus at Jaipur spread over 30 acres promises a dynamic campus experience. Arriving to it through a picturesque road winding through rows of honey coloured traditional homes, one can catch glimpse of the Aravalli hills, the rugged terrain, clusters of villages and imposing gateways.

With a built up area of over 5000 sq.metres, it offers both residential and non residential training programmes, the campus has excellent accommodation facilities (board and lodging) for up to 25 participants on a single and 50 participants on a twin sharing basis. The campus is equipped with a progressive library, modern class rooms and lecture halls with the latest teaching aids.

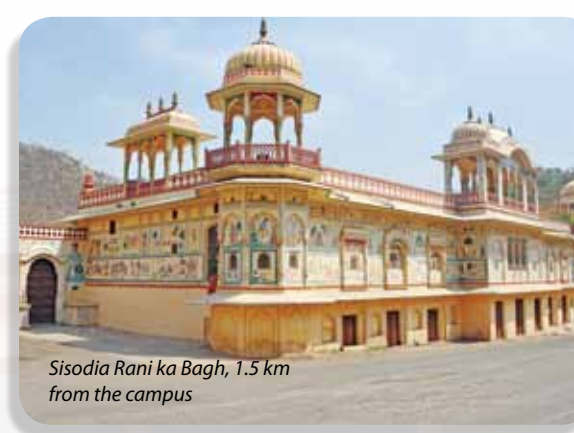
The hub of the campus is the main building styled in the traditional architectural style. Its imposing structure, balanced with delicate jali work, contains a huge central hall, which in turn branches off into the class rooms, lecture halls, smaller conference rooms, the administration offices and the dining and kitchen areas.

The neat symmetry of the building is offset by the carefully nurtured gardens that are visible from all sides of the building. The architecture encourages open spaces and is ideal for interaction and camaraderie, extending the participant's learning beyond the classroom.

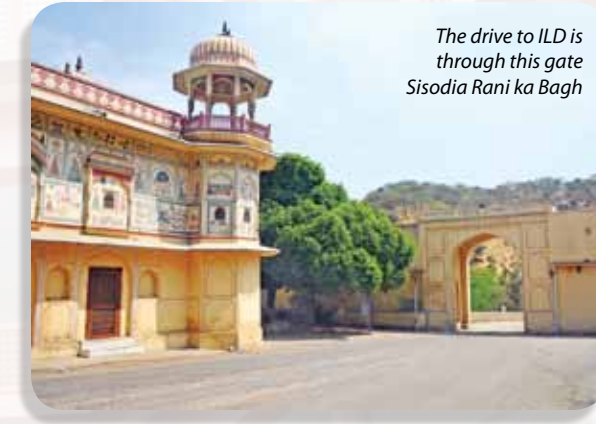
Beyond the building and its lawns lies a natural terrain of over 25 acres populated with rock formations and the native acacia trees.



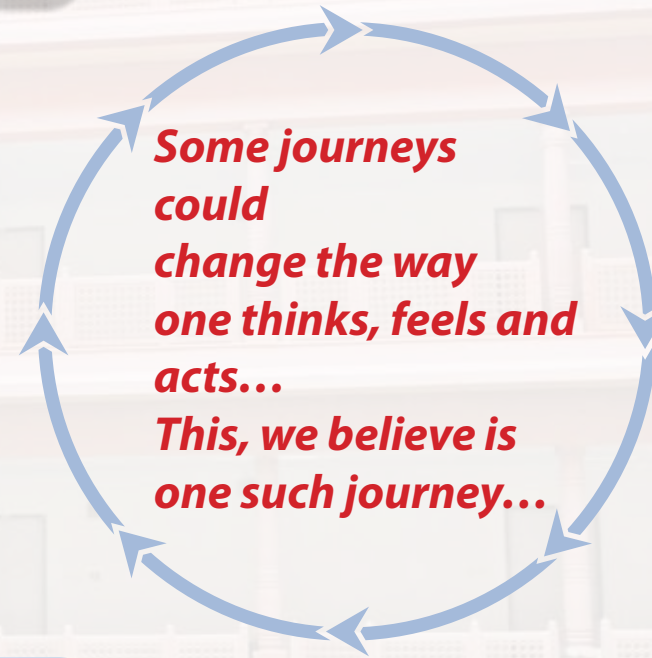
Honey coloured traditional homes - Ghat ki Ghunni



Sisodia Rani ka Bagh, 1.5 km from the campus



The drive to ILD is through this gate Sisodia Rani ka Bagh



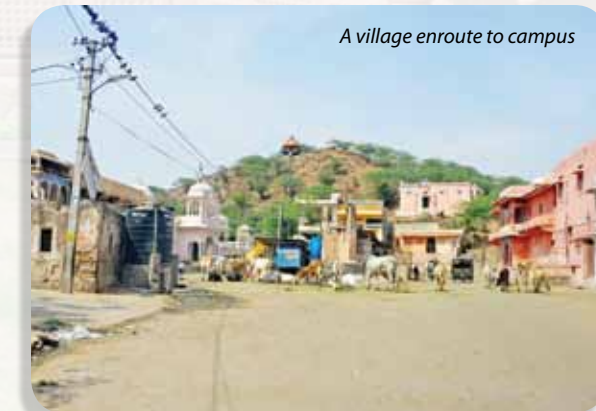
Enroute to the campus



Driving into the campus



Enroute to the campus



A village enroute to campus